

M/V GO AMERICA

150' Class DP1 Supply Vessel Specification Sheet



HULL SPECIFICATIONS

- Length Overall: 150'
- Beam: 36'
- Depth: 11'6"
- Draft Max: 10'
- Clear Deck: 90' x 30'

ACCOMMODATIONS

- Certified to Carry: 32
- Cabins / Berths: 6 / 18 + Passenger Lounge
- Walk in Cooler: Yes
- Commercial Ice Maker: Yes

GLOBALSUBDIVE.COM

3005 NW 25th AVENUE, POMPANO BEACH, FL 33069

+1-954-299-8181



PROPULSION

- **Main Engines:** 2 x Cummins KTA 38MO
- **Total HP:** 1,700 HP
- **Reduction Gears:** Twin Disc
- **Generators:** 2 x 99kW Cummins
- **Bow Thruster:** 360 HP, Diesel Driven

CAPACITIES

- **Deck Cargo:** 330 LT
- **Potable Water:** 14,982 usg
- **Fuel:** 31,497 usg / 77,163 usg* / 97,735 usg**
- **Ballast Water:** 75,982 usg
- **Liquid Mud:** 1,087 bbls
- **Methanol:** 41,572 usg

* Fuel Capacity When Utilizing Liquid Mud Tanks

** Fuel Capacity When Utilizing Liquid Mud and Methanol Tanks

ELECTRONICS

- **Radars:** Yes x 2
- **Auto Pilot:** Beier Integrated Systems
- **GPS (Navigation):** Yes
- **Echo Sounder:** Yes x 1
- **VHF Radios:** Yes x 3
- **Dynamic Positioning:** Beier Integrated Systems
- **DP Reference System:** GPS + Fan Beam
- **Electronic Plotter:** Yes
- **Sat Communication:** Vsat, Speeds Up to 1024kbps x1024kbps available

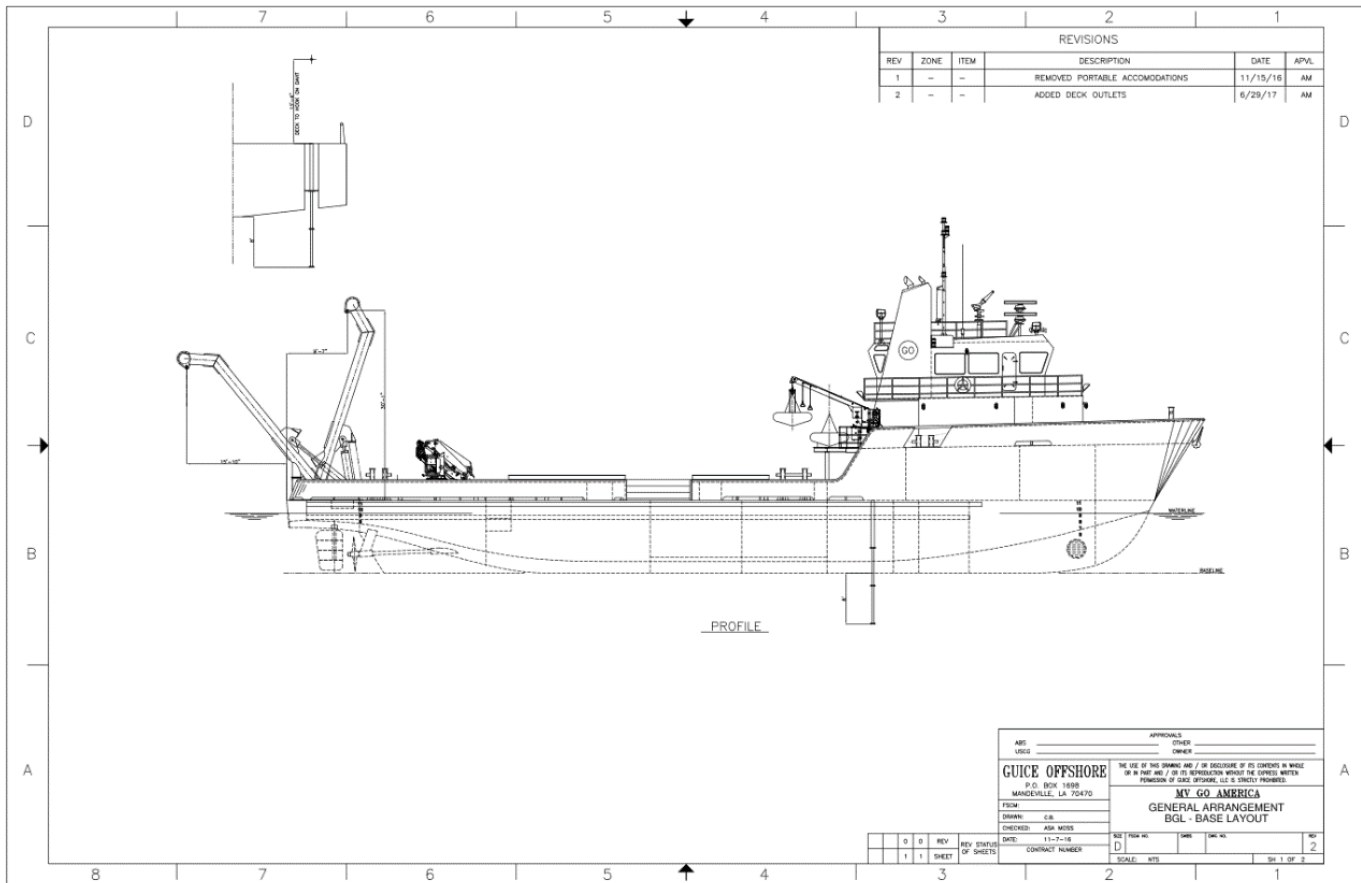
Sat Television: DirecTV

SPECIAL EQUIPMENT

- **Fire Monitor:** Yes
- **Deck Monitor Sockets:** 240 in a NATO Grid Pattern, 2' x 2'
- **Crane:** Palfinger PK-32002-M Knuckleboom (see lifting capacity diagram)
- **A-Frame:** Transom Mounted, 11-ton with Man-rate Braden CH280 Winch, Frame Inside Dimension 30'h x 25'w
- **HPU for Deck Gear:** Twin (redundant) 50-Hp Hydraulic Power Unit configured w/crossover manifold to allow either HPU to serve Crane, A-frame, or both
- **Moonpool:** 27-inch Inside Diameter (Transponder pole, submersible tracking and comms available upon request)
- **Steering Gear:** Dual Independent, Dual Ram Rudders Integrated with DP control and Redundant HPU
- **Removable Bulwarks:** 10' Starboard side, 3' Port side
- **FRC w/Davit:** USCG / SOLAS 4m Rescue Boat with 40 hp outboard

OPTIONAL EQUIPMENT & SERVICES

- **Triton 1000/2:** (2) ABS class, LED lighting, USBL Tracking/Navigation, manipulator arm, digital photography/video system, 305m max depth
- **Triton 3300/3:** (2) ABS class, LED lighting, USBL Tracking/Navigation, manipulator arm, digital photography/video system, 1000m max depth
- **DECO Chambers:** 54-inch and 60-inch DDC
- **Portable Dive Locker:** 20' Conex, with Halcyon Dive Systems gear for (6) Exploration Divers
- **Portable Deck Generator:** 97Kw diesel, 460v, 60Hz, 3-phase w/Hubbell 4100R7W cable connector
- **Mixed Gas Dive System:** NITROX/TRIMIX Maker, BAUER HP Compressors, Boost Pumps and Twin-tank/Rebreather support equipment
- **Diver Propulsion Vehicles:** 8 long-range tow-behind Halcyon Dive Vehicles (SUEX); 3- and 5-mile range at 500Fsw operating depth. Speed: 200-375 Ft Per Min
- **Camera Equipment:** Underwater Video, Still, Laser Scale, Benthic and Stereo Camera Systems



GLOBALSUBDIVE.COM

3005 NW 25th AVENUE, POMPANO BEACH, FL 33069

+1-954-299-8181